

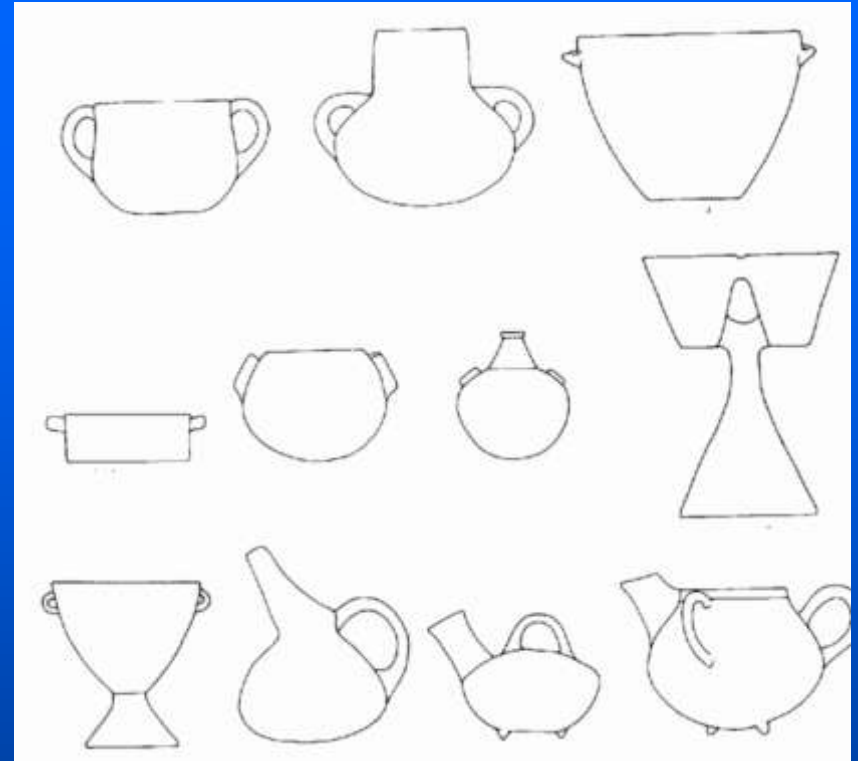
Prepalatial – EM I



Aghios Onouphrios Style



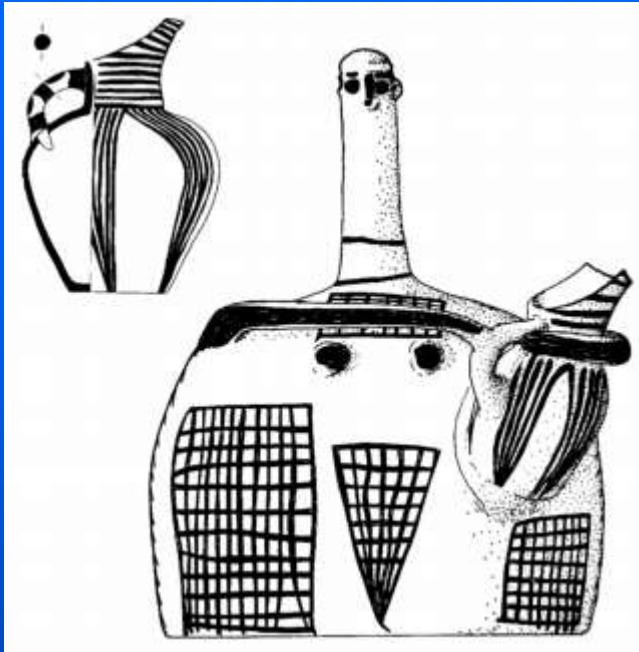
Pyrgos Style



Lebena Style



Prepalatial – EM II



Style Vasiliki or flamed



Oldpalatial/First Palatial – MM IA/B-II

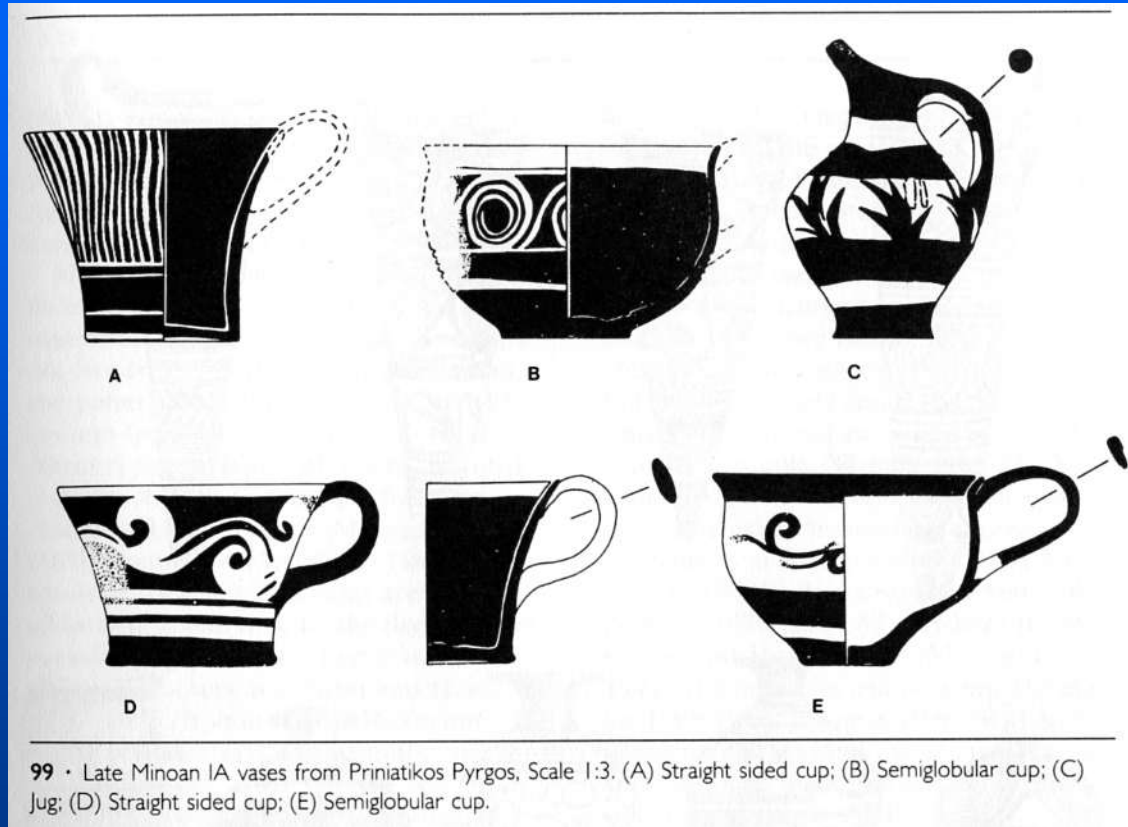
Kamares Ware



The Second Palatial Period - MM III-LM I

Pottery

SM III – post-Kamare



99 • Late Minoan IA vases from Priniatikos Pyrgos, Scale 1:3. (A) Straight sided cup; (B) Semiglobular cup; (C) Jug; (D) Straight sided cup; (E) Semiglobular cup.

LM IA

LM IA

The Second Palatial Period - MM III-LM I

Pottery



LM IB – Floral Style

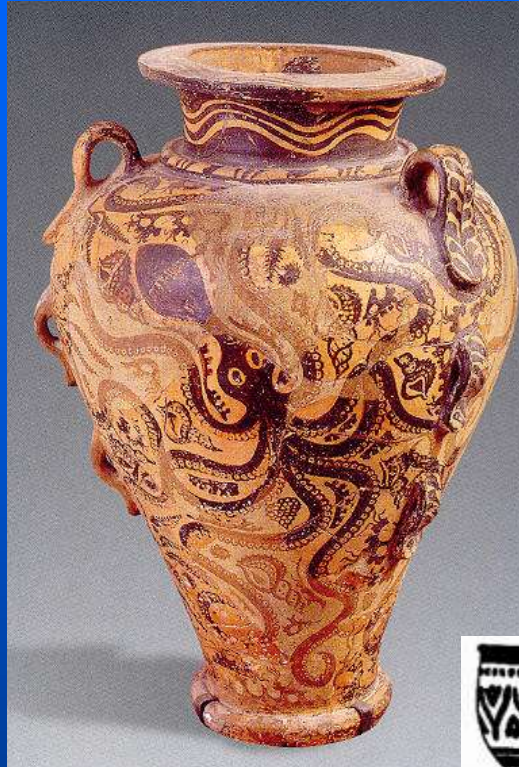


LM IB - Marine Style



LM II – Palatial Style

The Third Palatial Period, phase LM II-III A1



LM II

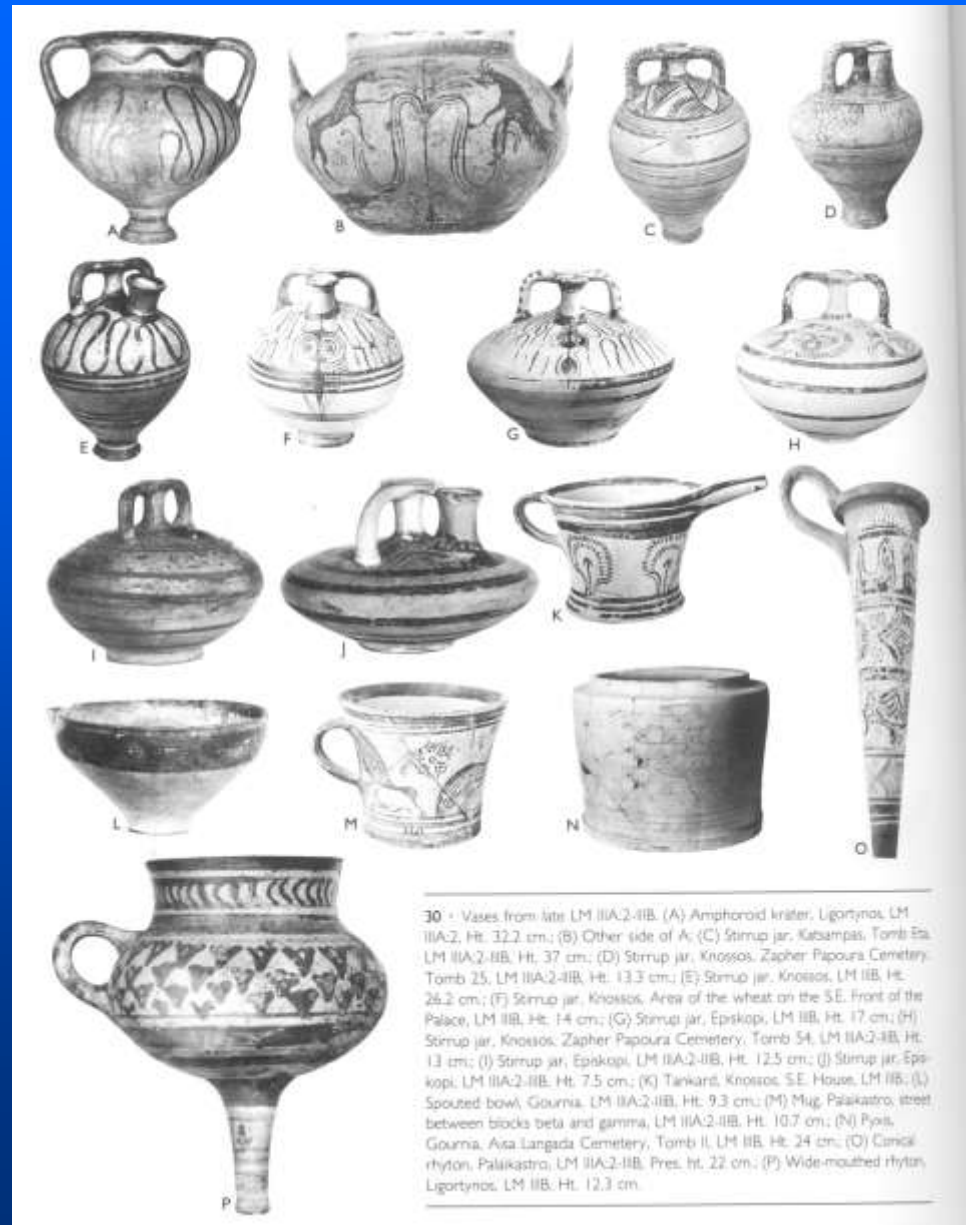


LM IIIA

The Third Palatial Period, phase LM IIIA2-B



LM IIIA2



30 • Vases from late LM IIIA2-IB. (A) Amphoroid krater, Ligortynos, LM IIIA2, Ht. 32.2 cm.; (B) Other side of A; (C) Stirrup jar, Katsampas, Tomb 6a, LM IIIA2-IB, Ht. 37 cm.; (D) Stirrup jar, Knossos, Zapher Papoura Cemetery, Tomb 25, LM IIIA2-IB, Ht. 13.3 cm.; (E) Stirrup jar, Knossos, LM IB, Ht. 26.2 cm.; (F) Stirrup jar, Knossos, Area of the wheat on the SE. front of the Palace, LM IB, Ht. 14 cm.; (G) Stirrup jar, Episkopi, LM IB, Ht. 17 cm.; (H) Stirrup jar, Knossos, Zapher Papoura Cemetery, Tomb 54, LM IIIA2-IB, Ht. 13 cm.; (I) Stirrup jar, Episkopi, LM IIIA2-IB, Ht. 12.5 cm.; (J) Stirrup jar, Episkopi, LM IIIA2-IB, Ht. 7.5 cm.; (K) Tankard, Knossos, SE. House, LM IB; (L) Spouted bowl, Gournia, LM IIIA2-IB, Ht. 9.3 cm.; (M) Mug, Palaikastro, street between blocks beta and gamma, LM IIIA2-IB, Ht. 10.7 cm.; (N) Pyxis, Gournia, Axa Langada Cemetery, Tomb II, LM IB, Ht. 24 cm.; (O) Cansical rhyton, Palaikastro, LM IIIA2-IB, Pres. ht. 22 cm.; (P) Wide-mouthed rhyton, Ligortynos, LM IB, Ht. 12.3 cm.

LM IIIA2-B

The Postpalatial Period – LM IIIC-SMin

